

Some things to look out for on your winter walks



New shoots

Daffodils and snowdrops will be busy underground getting ready to send up their flowers.



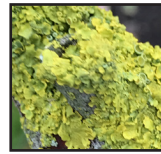
Robin

This red-breasted bird still sings in the winter.



Frosty leaves

Frost occurs when the temperature drops below freezing.



Lichen

A sign of clean air, lichens grow on other things. They do no harm, birds use them as nesting material.



Catkins

Hazel will produce catkins as early as January, look closely for the tiny pink star flower.



Wildflowers

Some wildflowers will produce a lone bloom in the cold months. Lucky for the bees!



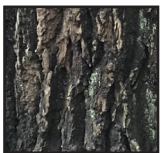
Tree buds

Look out for signs of life at the end of branches on trees.



Ivy berries

Ivy produces lots of berries in the winter to feed the birds.



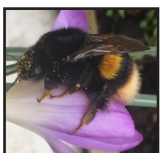
Interesting bark patterns

Can you tell the type of tree by its bark? Oak looks like elephant skin!



Holly berries

Holly has a male and a female tree. Red holly berries only form on the female.



Bumblebee

Queen bumblebees hibernate but come out on sunny days in search of flowers to feed on.



Bird box, bat box, bee box!

Look in trees to see if a nature lover has put up a home for wildlife, maybe it was you!



This year let's all
help nature
on our own doorstep!

Find out more here... www.seedball.co.uk